

2017 RED RIVER WATERWAY PRIORITY REPAIR LIST

Prepared by Joel Brown
16 Sept 2017



“The views, opinions and findings contained in this report are those of the author(s) and should not be construed as an official Department of the Army position, policy or decision, unless so designated by other official documentation.”



**US Army Corps
of Engineers**



RED RIVER DREDGING SITES

NUMBER	SITE	MILE
1	Lock 1 Lower Approach and Chamber	44
2	Westdale	193
3	Bull Revetment	173
4	Campti	159.7
5	Socot Lower	154.5
6	Lock 3 Lower Approach	116.3
7	Lock 2 Lower Approach and Chamber	74
8	Mile 40	40
9	The Pile Dikes	36.8
10	Lorran Revetment	36
11	Madam Lee	34.5

Dredge Integrity should complete Blue Cane on the Ouachita /Black River approximately Aug 26th and return to Red River.



RED RIVER DIKE MARKER REPAIR 2017

Grand Ecore-Mile 155.3- Drove new dike marker pole 7-15-17. Set at 32 feet above normal pool, approx. 35' in ground.

Socot-Mile 156.8L- Drove new dike marker pole 7-16-17. Set at 32' above normal pool. Approx 25' in ground.

Socot-Mile 156.5- Straightened existing dike marker pole. 7-16-17

Campti-Mile 159.5- Drove new dike marker pole 7-16-17. Set at 32' above normal pool. Approx 30' in ground.

Powhatan-Mile 163.2- Straightened existing dike marker pole. 7-17-17

Lumbra-Mile 164- attempted to straighten existing pole, broke off. 7-17-17. Will replace.

Crain-Mile 166.5- Drove new dike marker pole 7-17-17. Set at 32' above normal pool. Approx 25' in ground.

Lumbra-Mile 164- Drove new dike marker pole 7-18-17. Set at 32' above normal pool. approx. 30' in ground.

Nicholas-Mile 174.9- Drove new dike marker pole 7-19-17. Set at 30' above normal pool. Approx. 35' in ground.

Hollingsworth(Nicholas Upper)-Mile 175.5L- Pulled old pole out and drove new dike marker pole 7-19-17. Set at 30' above normal pool. Approx 35' in ground.

Lock 5 Lower-Mile 196.5- Drove new dike marker pole 7-20-17. Set at 30' above normal pool, Approx 35' in ground.

Secure Floating Plant at Lock 5 upper pool 7-20-17 for Off Weekend.

Williams-Mile 192.5- Pulled broken dike marker up, replaced with new pole. 7-24-17. 34' above normal pool, Approx. 32' in ground. Hit something hard, stopped going in ground.

Fausse-Mile 151.0- Straightened existing pole 7-25-17

Natchitoches-Mile 150.7- Straightened existing pole 7-25-17

Boyce Revt.-Mile 110.0- Drove new dike marker pole 7-28-17. 34' above normal pool, 30' in ground.

Bertrand- Mile 109.0- Drove new dike marker pole 7-28-17. 34' above normal pool, 35' in ground.

Bertrand- Mile 108.8- Did not drive new pole. Location is on the bank, which is sluffed off pretty good. If dayboard is required we may can use a tree?

Mead Revt.- Mile 101.5- Drove new dike marker pole 7-28-17. 32' above normal pool, 24' in ground.

Phillips Bayou- Mile 95.8 Drove new dike marker pole 7-28-17. 28' above normal pool. 25' in ground.

Wilson Pt- Mile 71.2- Drove new dike marker pole 7-29-17. 34' above normal pool. 28' in ground.

Moncla- Mile 59.0R- Tried to straighten existing pole, broke off. 7-29-17

Ben Routh- Mile 58.7- Straightened existing pole. 7-29-17

Moncla- Mile 59.0R- Drove new dike marker pole 7-30-17. 35' above normal pool. 35' in ground.

Barbin- Mile 53.2- Drove new dike marker pole 7-30-17. 33' above normal pool. 35' in ground.

Derussy Realign- Mile 52.5- Drove new dike marker pole 7-30-17. 30' above normal pool. 30' in ground.

Norman Revt- Mile 52.1- Drove new dike marker pole 7-31-17. 30' above normal pool. 28' in ground.

File Name



US Army Corps
of Engineers.



HIGH PRIORITY AREAS OF CONCERN FOR ROCK REPAIRS

2017 RED RIVER PRIORITY REPAIR LIST

Priority Ranking	Revetment/Dike	Dredging Required	Channel Navigation Impacted	Repair Description	Estimated Stone Quantites (Tons)	Estimated ACM Quantites (Squares)	Estimated Cost
1	Lorran/Lorran Dikes	Y	Y	Repair upper 5 dikes (5 x 350 lf x 10 tons/ft) Trail Dike eroded (600 lf x 10 tons/ft)	23500		\$1,292,500
2	Larto/Larto Dikes	Y	Y	Dikes are degraded (10 dikes x 250 lf x 10 tons/ft)	25000		\$1,375,000
2	Lac Amelia	Y	Y	Lower end of revetment is degraded (2650 lf x 15 tons/ft)	39750		\$2,186,250
3	Alligator Bayou	N	N	ACM Repairs (1100 lf x 100 lf/ 100 sf/square)		1100	\$825,000
4	Socot	Y	Y	Lower portion of revetment and tieback are not visible (2650 x 10 tons/ft) Tieback eroded (1600 lf x 5 tons/ft)	34500		\$1,897,500
5	Campti	Y	Y	Trail dikes is degraded (3600 lf x 10 tons/ft)	36000		\$1,980,000
6	Westdale	Y	Y	Dikes are degraded (3200 lf x 10 tons/ft)	32000		\$1,760,000
7	Cadoche	N	N	Revetment is not visible along large portions adjacent to levee (1300 lf x 10 tons/ft)	13000		\$715,000
8	Hog Lake Dikes	N	Y	Dikes are degraded (10 dikes x 200 lf x 10 tons/ft)	20000		\$1,100,000
9	Wilkerson Point	N	Y	Trail Dike is missing and land mass behind it washed away in flood (1200lf x 10 tons/ft)	12000		\$660,000
10	Williams	N	Y	Longitudinal Dike and Tiebacks severely degraded (4500 lf x 15 tons/ft + 1200 lf x 10 tons/ft)	79500		\$4,372,500



LORRAN/LORRAN DIKES



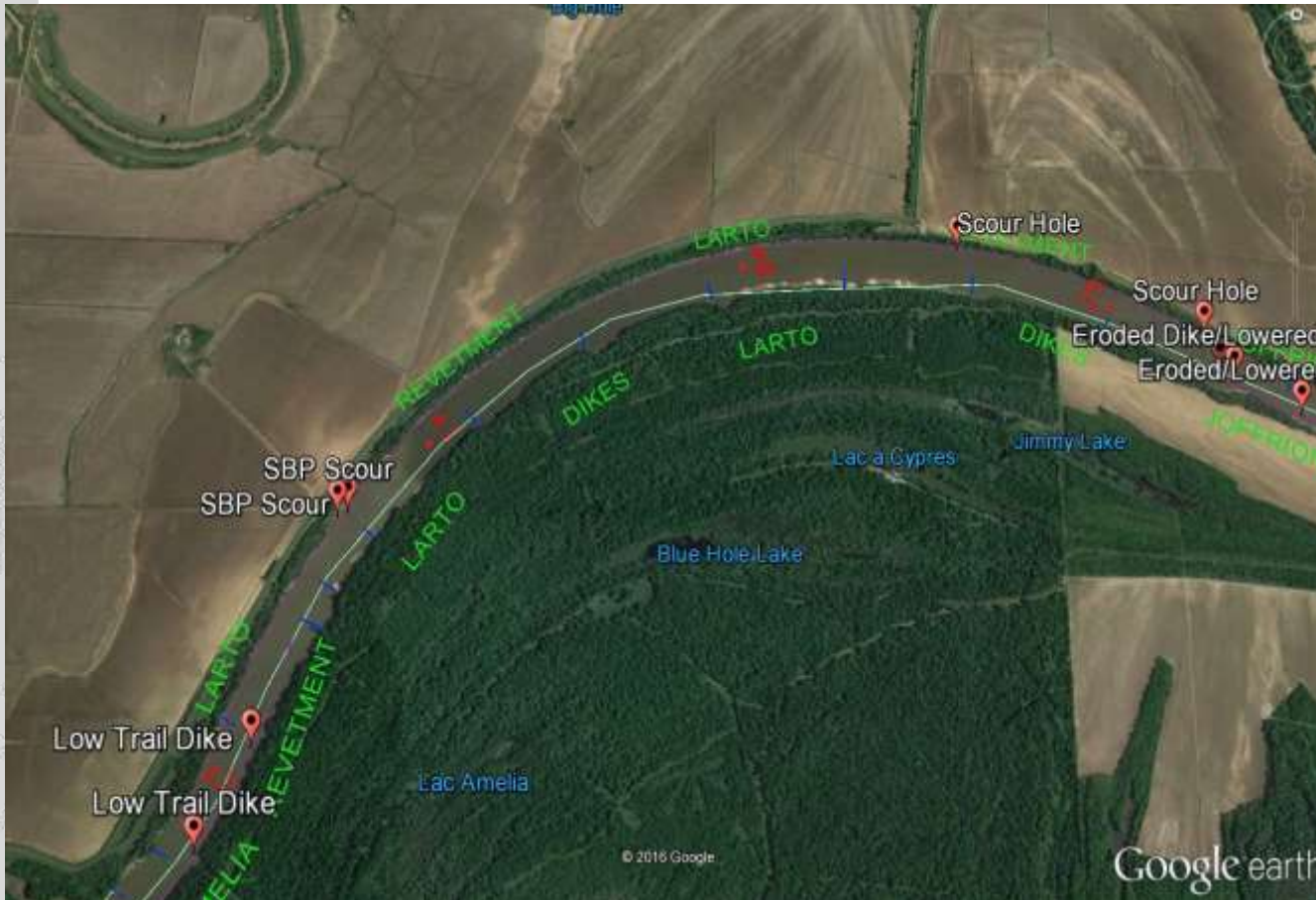
RM 36.8 TO 35.4-R AHP



US Army Corps
of Engineers.



LARTO/LARTO DIKES



RM 42.1 TO 38.7-L AHP

LAC AMELIA REVETMENT



RM 42.4 TO 41.6-R AHP

**Low Trail Dike Not Visible @ 12ft Water Depth