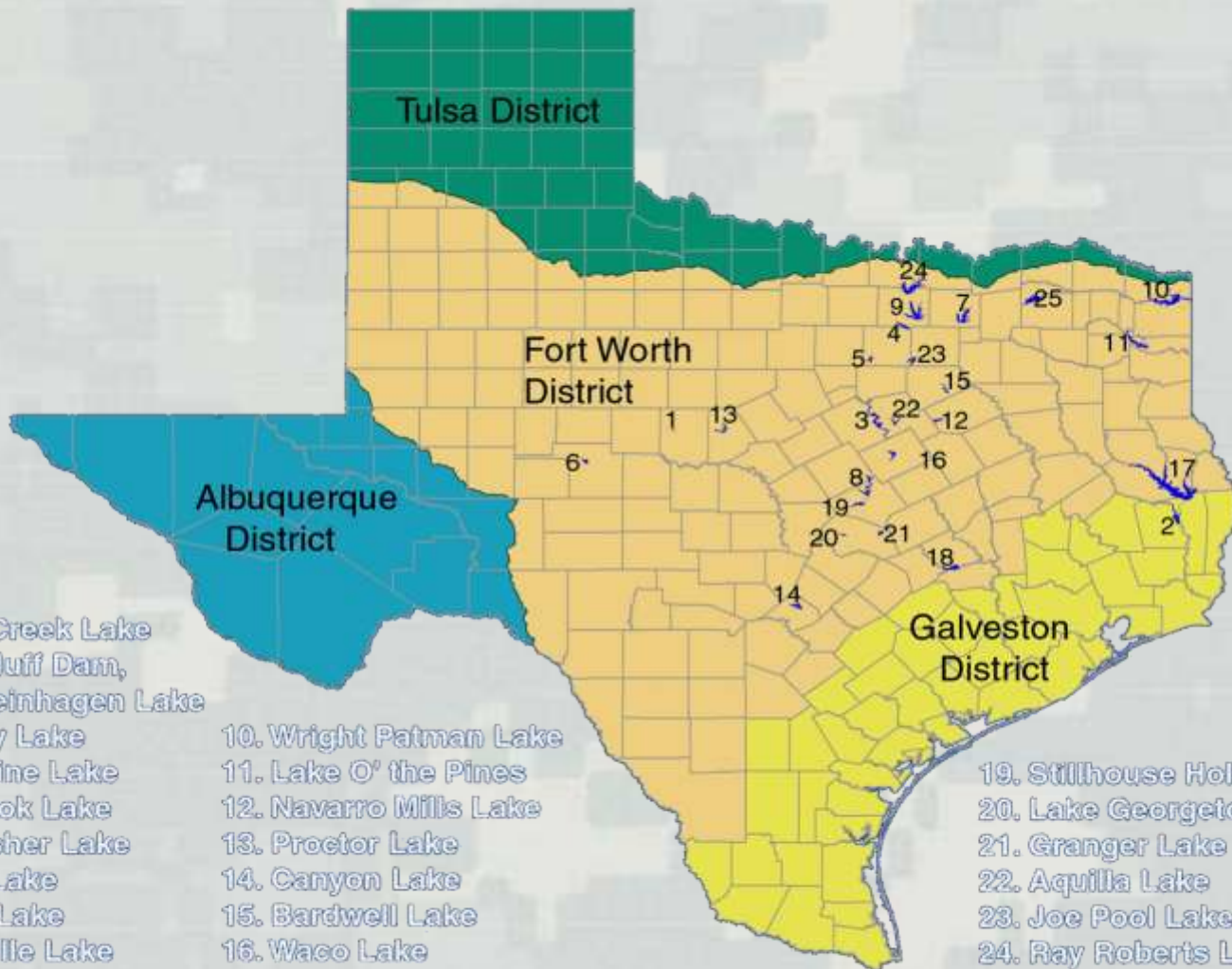


Fort Worth District

***Red River Valley Association
May 23rd, 2019***



Civil Works Boundaries



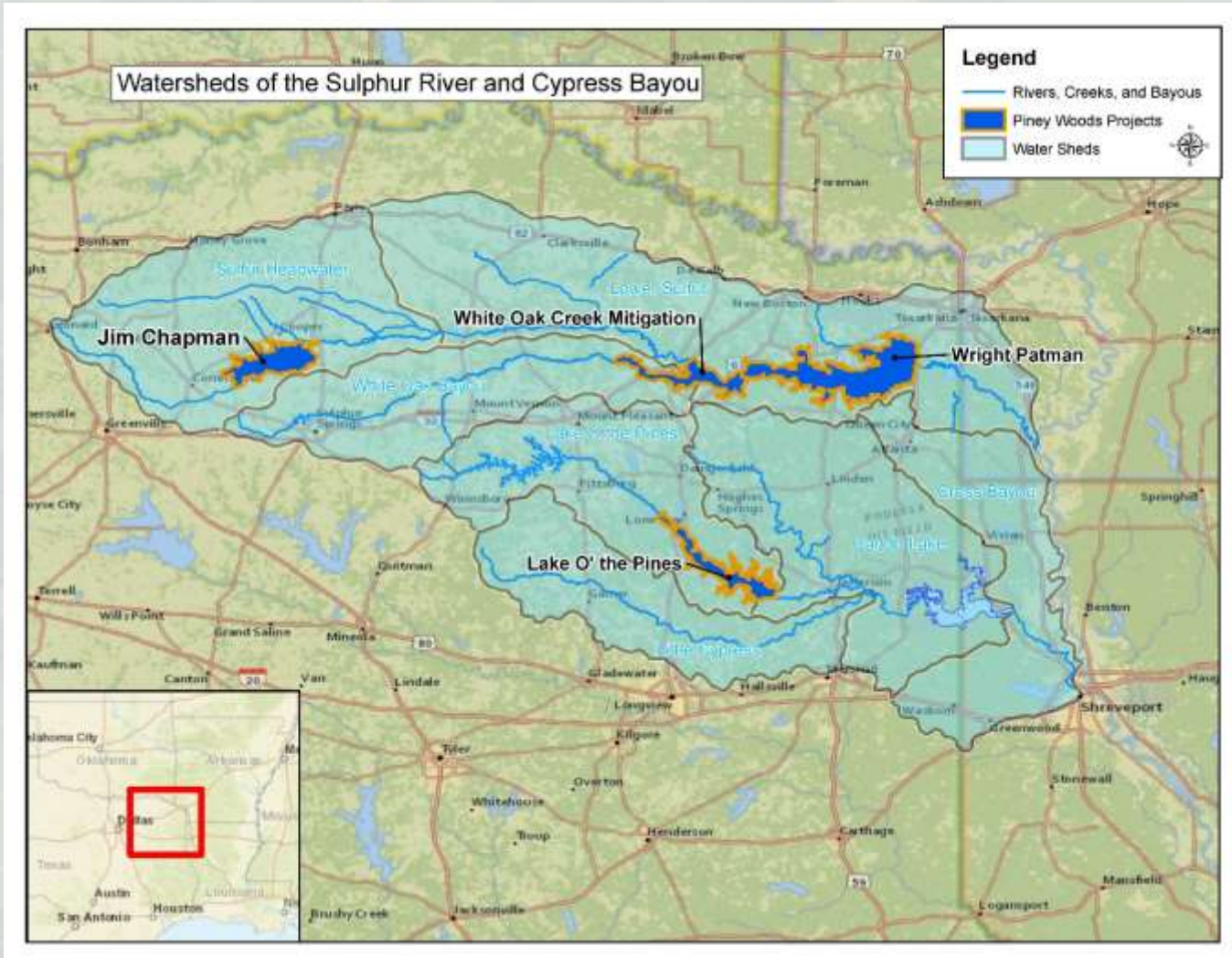
- 1. Hords Creek Lake
- 2. Town Bluff Dam,
B.A. Steinhagen Lake
- 3. Whitney Lake
- 4. Grapevine Lake
- 5. Benbrook Lake
- 6. O.C. Fisher Lake
- 7. Lavon Lake
- 8. Belton Lake
- 9. Lewisville Lake

- 10. Wright Patman Lake
- 11. Lake O' the Pines
- 12. Navarro Mills Lake
- 13. Proctor Lake
- 14. Canyon Lake
- 15. Bardwell Lake
- 16. Waco Lake
- 17. Sam Rayburn Reservoir
- 18. Somerville Lake

- 19. Stillhouse Hollow Lake
- 20. Lake Georgetown
- 21. Granger Lake
- 22. Aquilla Lake
- 23. Joe Pool Lake
- 24. Ray Roberts Lake
- 25. Jim Chapman Lake
and Cooper Dam



Sulphur and Cypress Bayou Watersheds



Current Pool / Facility Status

Dam Safety Surveillance Plan/Lake Elevations/Forecasts of 22 May 2019

Lake/Dam	Current Inspection Frequency	22 May	Weekly Inspection Elevation*	Daily Inspection Elevation*	Hourly Inspection Elevation*	Normal Elevation	Currently Releasing (cfs)
Lake o' the Pines	Daily	241.03	235.0	240.0	248.0	228.5	3,220
Jim Chapman Lake/Cooper Dam	Monthly	443.31	444.0	445.0	446.2	440.0	1,974
Wright Patman Lake/Dam	Weekly	240.70	238.0	245.0	256.0	220.6***	9,882

Lake O' the Pines Facility Closures: Brushy Creek Park, the following facilities are partially closed: Cedar Springs, Johnson Creek, Brushy Creek day-use, Alley Creek Park.

Wright Patman Facility Closures: Elliott's Bluff boat Ramp, "A" camping loop Clear Springs Park, Malden day-use boat ramp and all swimming beaches.

*** winter pool level



BUILDING STRONG®

Fort Worth District Civil Works Program

Fort Worth District Civil Works Program	Fiscal Year 2019 Workplan	Fiscal Year 2019 President's Budget
Investigations	\$0	\$0
Construction	\$4,445,000	\$55,000,000
Operations and Maintenance	\$2,456,000	\$114,907,000



BUILDING STRONG®

Fort Worth District Lakes within the Red River Basin

Fort Worth District Lakes	Fiscal Year 2018 Obligations	Fiscal Year 2019 Anticipated Obligations	Fiscal Year 2020 President's Budget
Jim Chapman (Cooper) Lake	\$1,955,729	\$1,964,297	\$2,072,000
Lake O' the Pines	\$3,894,083	\$4,429,684	\$3,643,000
Wright Patman Lake	\$5,358,744	\$5,514,663	\$4,389,000

FY 19 Significant Maintenance packages: Wright Patman - \$1.5M Gate Repairs; \$1.2M Stilling Basin Repair/Dewater LP - \$900k Gate Repairs JC - \$175k PA & PI Inspections



Wright Patman Lake



FY18: Repairs to Dam and Park Roads, Shoreline and Cultural Site Protection

FY19: Service Gate and Stilling Basin Repairs

FY20: Replace Cables on Flood Gates

FY20: LED Lighting at Project Office/Compound



BUILDING STRONG®

Jim Chapman Lake



FY19: Periodic Inspection and Periodic Assessment

FY20: Spillway Stilling Basin Inspection

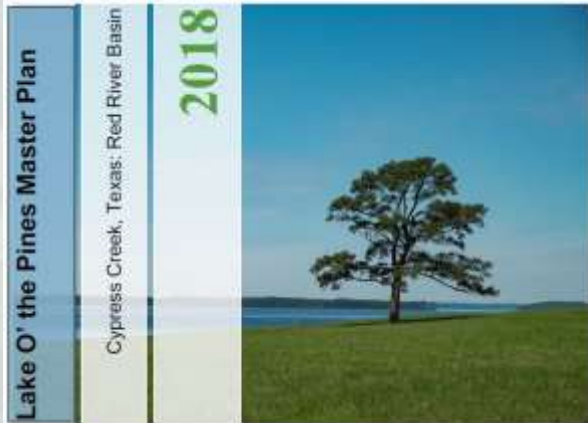
FY20: LED Lighting at Project Office/Compound

FY20: Safety Railing and Personnel Retrieval System



BUILDING STRONG®

Lake O' the Pines



FY18: Master Plan Update, Park Road and Facility Repairs
FY19: Service Gate Repairs, Spillway Investigation and Shoreline Management Plan Update
FY20: Replace Lift Cables on Flood Gates and Crane



BUILDING STRONG®

Piney Woods Aquatic Invasive Management

Lake O' The Pines:
Permanent establishment of
Giant salvinia north of state
highway 155.



MOU: TPWD, NETMWD & USACE

FY18 Aquatic Vegetation Plan -
TPWD contracted spraying and
surveying: \$10,668.00 - NETMWD
chemical: \$3,206.00 - USACE



BUILDING STRONG®

Civil Works Non-O&M Activities Red River Tributaries

- ***Sulphur River Basin Feasibility Study***
 - ***Focuses on reallocation of storage at Wright Patman Reservoir. Non-federal sponsor is Sulphur River Basin Authority***
 - ***Tentatively Selected Plan (TSP) presented to SRBA with elevation 235'***



CONTACT INFORMATION

Mr. Ricky Raymond

Operations Project Manager

Piney Woods Regional Office

2669 FM726, Jefferson TX 75657

Ricky.D.Raymond@usace.army.mil

903-665-3911 Ext: 12



BUILDING STRONG®